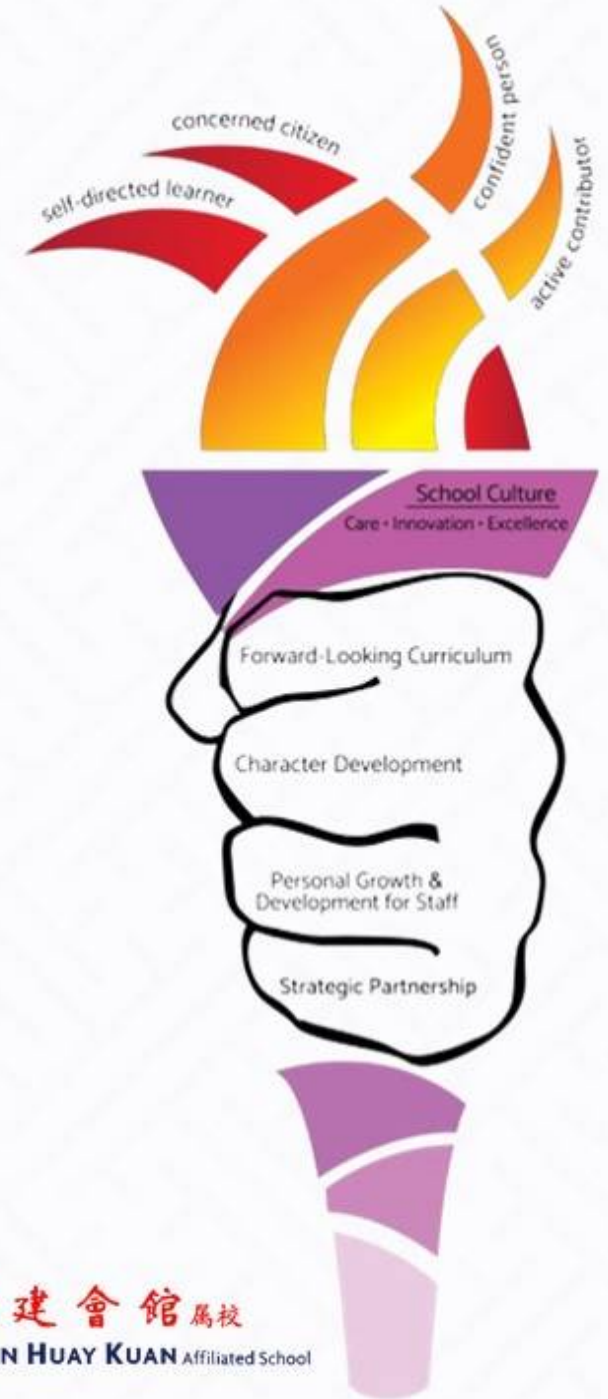


P5 & P6 Parent Engagement Session 2022

1 April 2022

6.00 p.m. – 8.00 p.m.



崇福學校
CHONGFU SCHOOL
ESTD 1915



新加坡福建會館屬校
SINGAPORE HOKKIEN HUAY KUAN Affiliated School

Overview

Item

- 1 Chongfu Strategic Map
- 2 PSLE Scoring
- 3 S1 Posting
- 4 DSA
- 5 Assessments & Programmes
- 6 Cyber Wellness
- 7 Q & A
- 8 Class Engagement Session

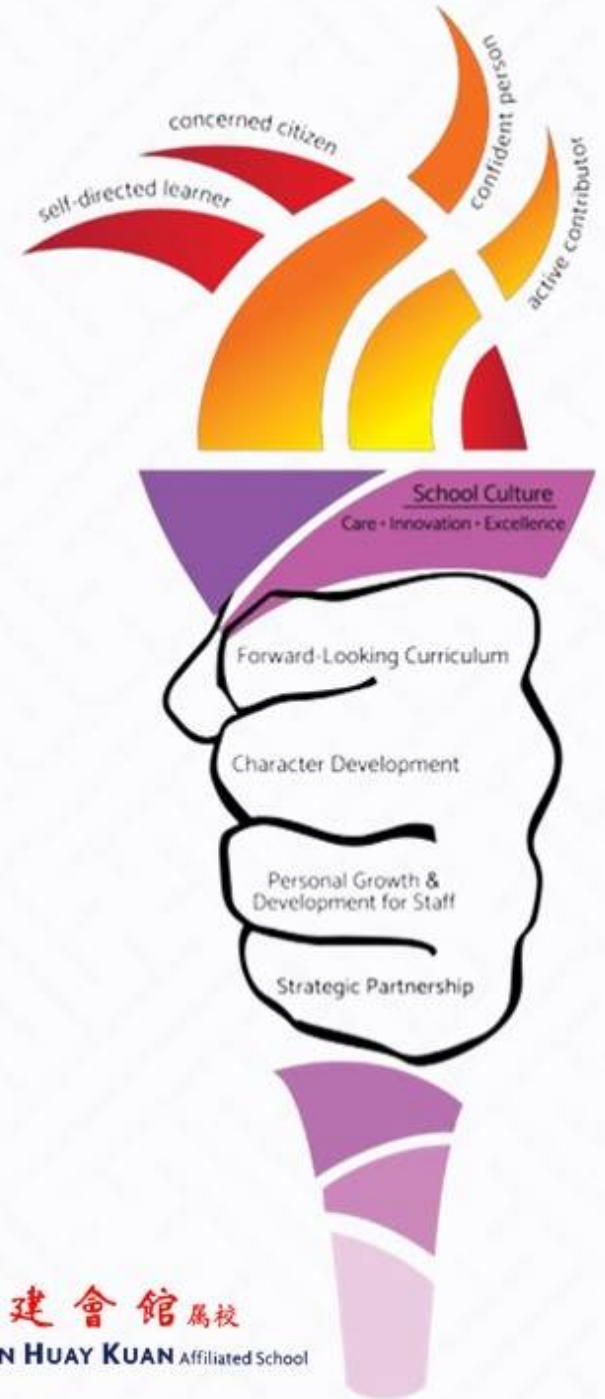


崇福學校
CHONGFU SCHOOL
ESTD 1915



新加坡福建會館屬校
SINGAPORE HOKKIEN HUAY KUAN Affiliated School

Chongfu Strategic Map



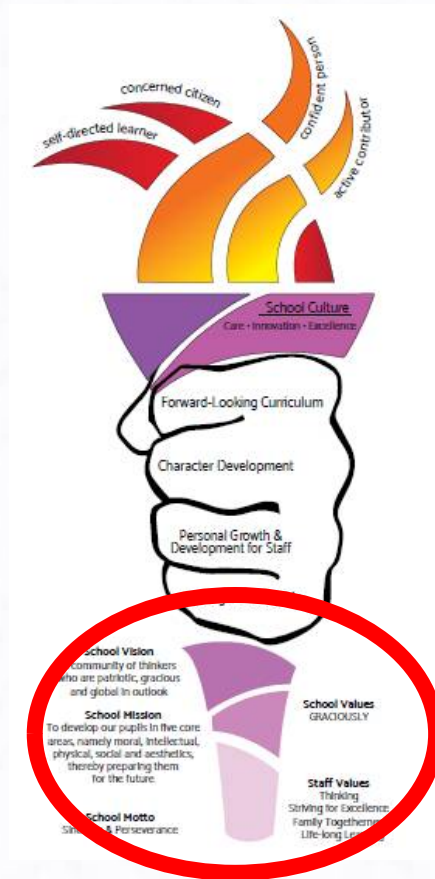
崇福學校
CHONGFU SCHOOL
ESTD 1915



新加坡福建會館屬校
SINGAPORE HOKKIEN HUAY KUAN Affiliated School

Our Chongfu Torch

- A visual representation of our strategic map



School Vision

A community of thinkers who are patriotic, gracious and global in outlook

School Mission

To develop our pupils in five core areas, namely moral, intellectual, physical, social and aesthetics, thereby preparing them for the future

School Motto

Sincerity & Perseverance

School Values

GRACIOUSLY

Staff Values

Thinking
Striving for Excellence
Family Togetherness
Life-long Learning



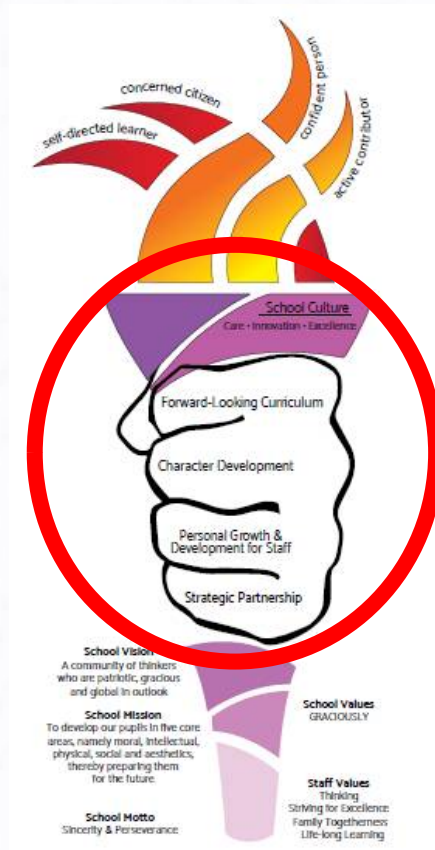
崇福學校
CHONGFU SCHOOL
ESTD 1915



新加坡福建會館屬校
SINGAPORE HOKKIEN HUAY KUAN Affiliated School

Our Chongfu Torch

- A visual representation of our strategic map



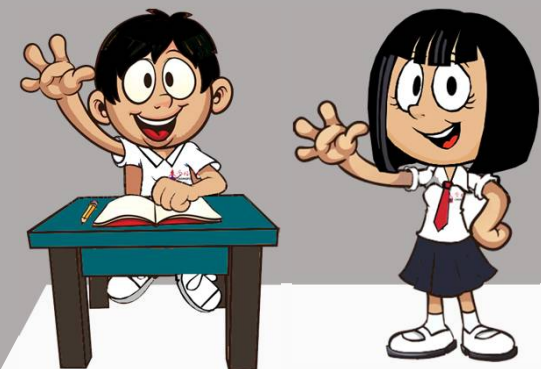
崇福學校
CHONGFU SCHOOL
ESTD 1915

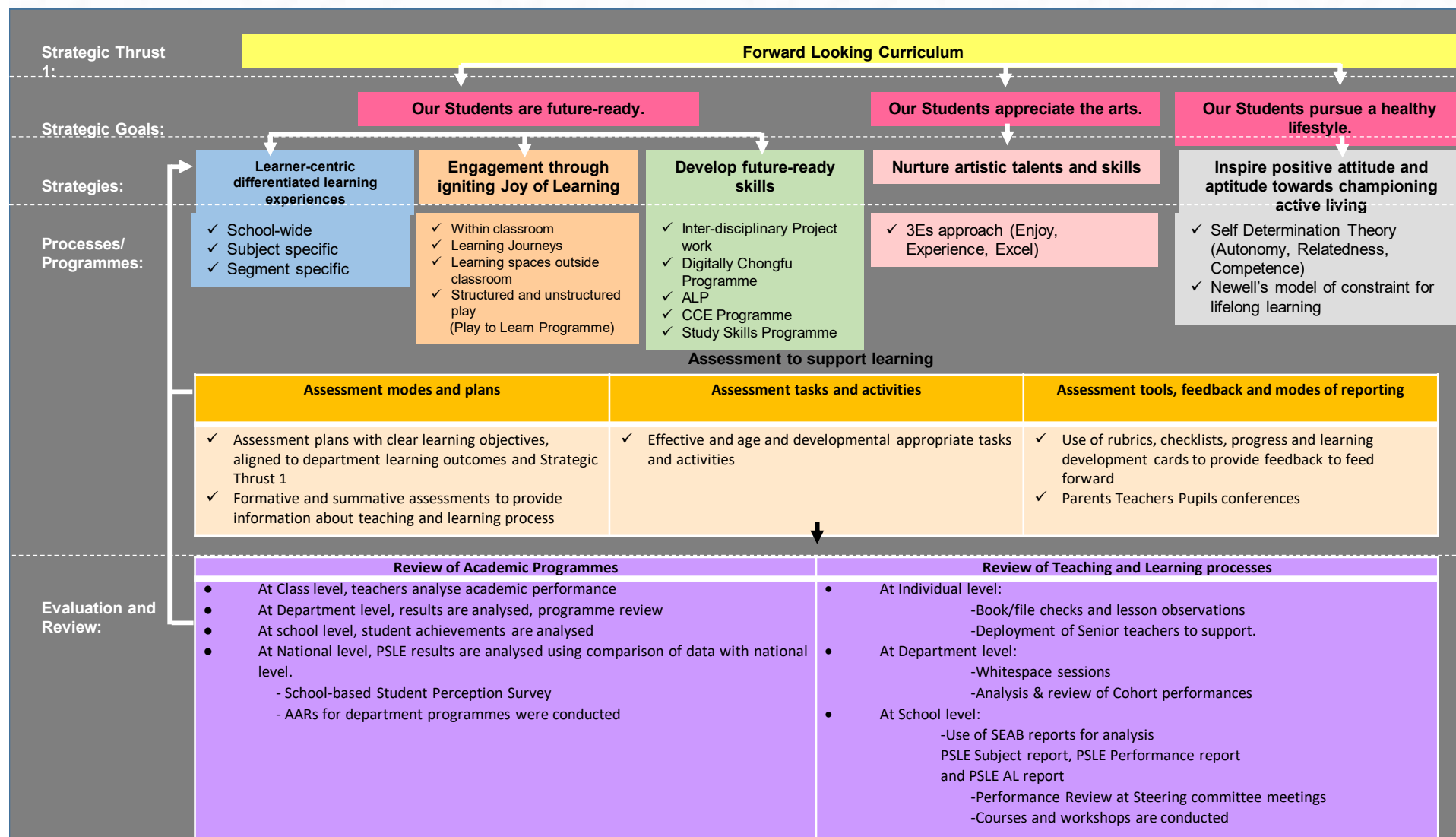


新加坡福建會館屬校
SINGAPORE HOKKIEN HUAY KUAN Affiliated School

STRATEGIC THRUST 1

Forward-Looking Curriculum





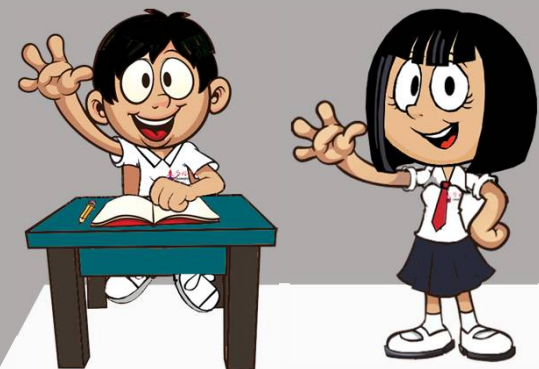
崇福學校
CHONGFU SCHOOL
ESTD 1915



新加坡福建會館屬校
SINGAPORE HOKKIEN HUAY KUAN Affiliated School







STRATEGIC THRUST 2

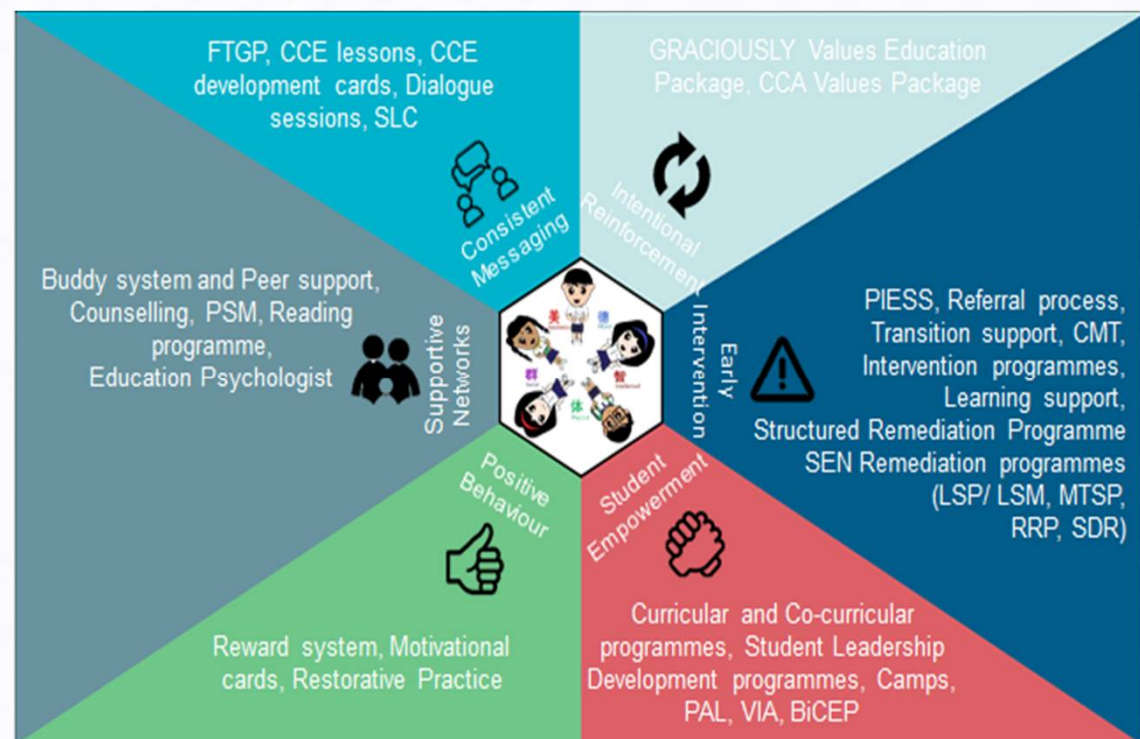
Character Development



Student Well-being Framework

Leverage on 6 enablers to establish shared responsibility among all stakeholders to foster and strengthen students' well-being

Enabler 1		Consistent Messaging
Enabler 2		Intentional Reinforcement
Enabler 3		Support Networks
Enabler 4		Positive Behaviour
Enabler 5		Student Empowerment
Enabler 6		Early Intervention



崇福學校
CHONGFU SCHOOL
ESTD 1915

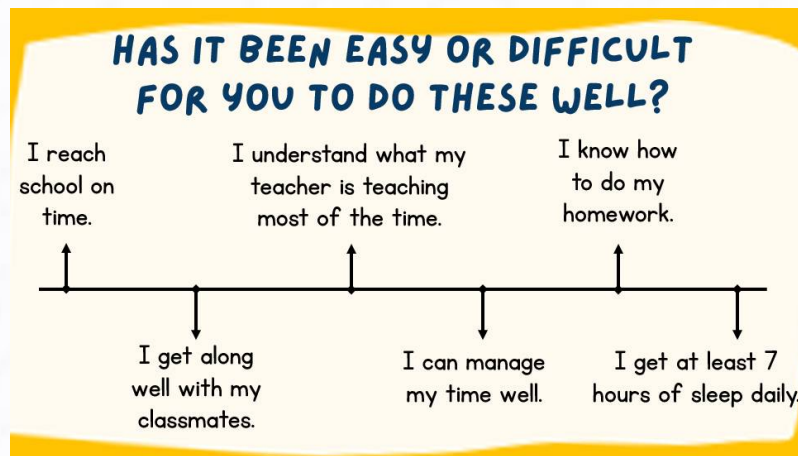


新加坡福建會館屬校
SINGAPORE HOKKIEN HUAY KUAN Affiliated School

Supporting Student Well-being

FTGP (TERM 2 WEEK 1)

Level	Timing (a.m.)	Lessons
P1-P4 & P6	7:35-8:15	1) FTGP Check-in lesson 2) Chongfu Self-care Tips
	8:15 - 8:45	Class Committee Investiture
P5	7:35-8:00	1) FTGP Check-in lesson 2) Chongfu Self-care Tips
	8:00 - 8:45	Study Skills Lesson 1



MY GRACIOUSLY CHONGFU VALUES EDUCATION JOURNEY



CCA Values Education

LLP- Camp Inspire

Peer Support

Recognition and Rewards

Class Committee



CCE Development Card

Cyber Wellness

Student Leadership



新加坡福建會館屬校
SINGAPORE HOKKIEN HUAY KUAN Affiliated School





At the end of 6 years of our students' uniquely Chongfu experience, we hope all our students continue to exemplify their development in the five core areas, namely moral, intellectual, physical, social and aesthetics, thereby preparing them for the future.



崇福學校
CHONGFU SCHOOL
ESTD 1915

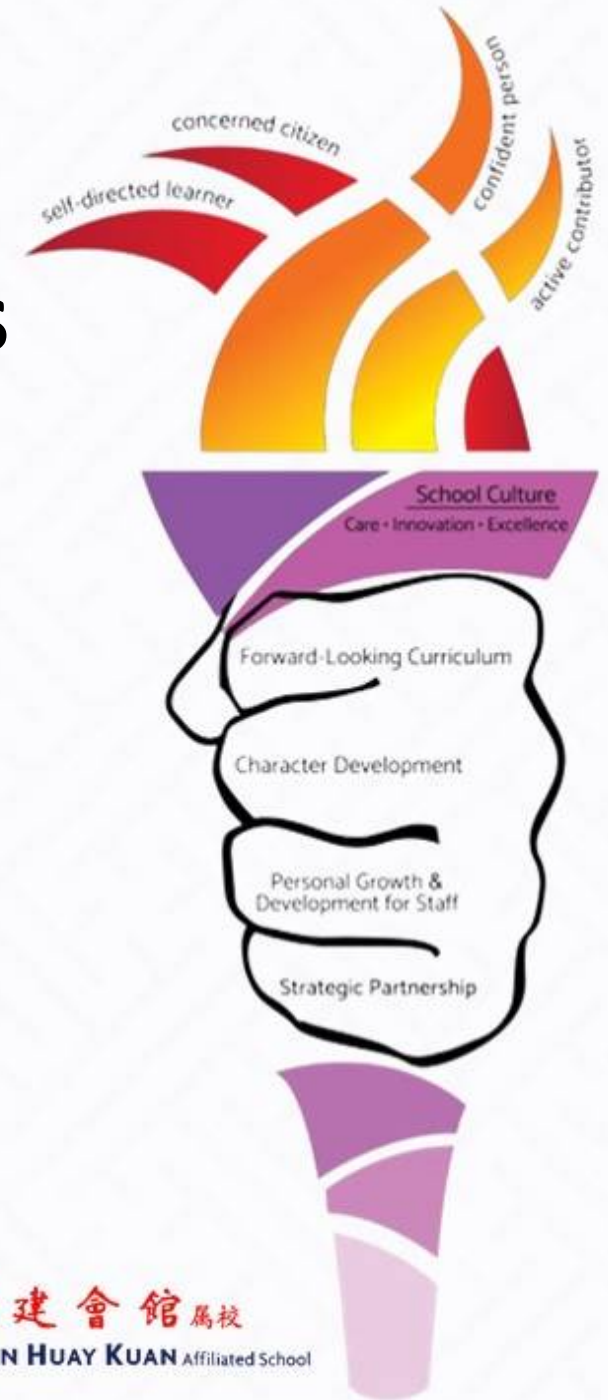


新加坡福建會館屬校
SINGAPORE HOKKIEN HUAY KUAN Affiliated School

PSLE Scoring

S1 Posting & DSA

Assessments & Programmes

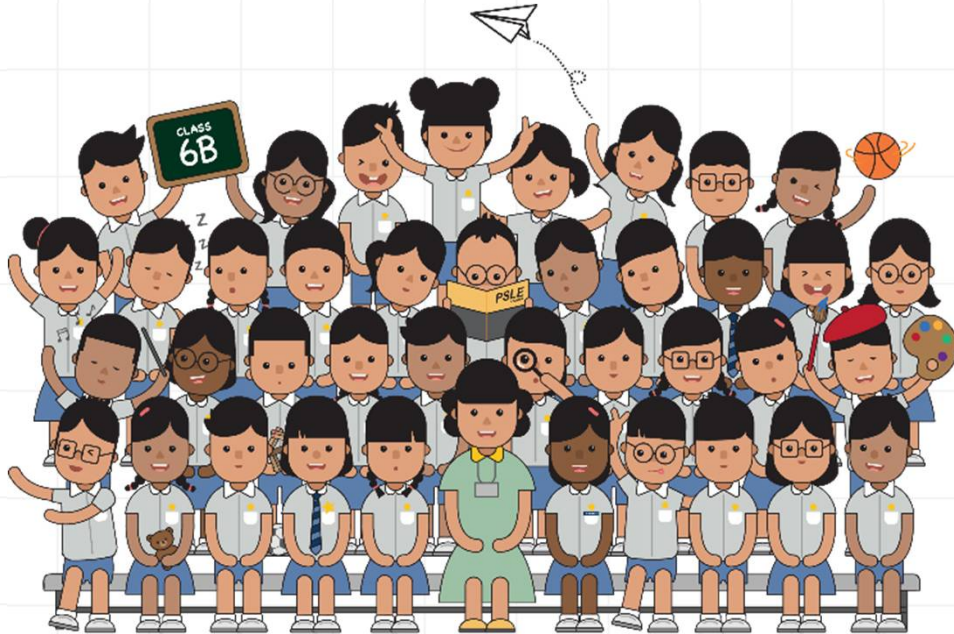


崇福學校
CHONGFU SCHOOL
ESTD 1915



新加坡福建會館屬校
SINGAPORE HOKKIEN HUAY KUAN Affiliated School

OUR JOURNEY WITH THE STUDENTS



Primary 5 & 6 levels continue to be years of **growth** and **discovery** as our students prepare to head to secondary school.

The PSLE is also one of many milestones in their education journey.

INDICATIVE PSLE SCORE RANGES FOR INDIVIDUAL SECONDARY SCHOOLS



© MINISTRY OF EDUCATION, COMMUNICATION AND ENGAGEMENT GROUP, 2021

THE PSLE CHANGES ARE PART OF A BIGGER STORY

Over the years, we have been fine-tuning the education system to help our students discover and develop their strengths and interests, while moving away from an over-emphasis on academic results. The PSLE Scoring changes aim to reduce an **over-emphasis on academic results** by:



Reducing fine differentiation
of students' examination
results at a young age



Recognising a student's level
of achievement, regardless
of how his/her peers have
done



Offering students and
parents a wider range of
secondary schools to explore



THE PSLE SCORING

WHAT ARE ALs?

AL	RAW MARK RANGE
1	≥ 90
2	85 – 89
3	80 – 84
4	75 – 79
5	65 – 74
6	45 – 64
7	20 – 44
8	< 20

- AL stands for Achievement Level (AL).
- Students with similar scores in each subject are grouped into scoring bands measured in 8 ALs.

WHAT ARE AL_s?

FOUNDATION LEVEL AL	FOUNDATION RAW MARK RANGE	EQUIVALENT STANDARD LEVEL AL
A	75 – 100	6
B	30 – 74	7
C	< 30	8

- AL A to AL C for Foundation level subjects are mapped to AL 6 to AL 8 of Standard level subjects respectively, to derive a student's overall PSLE Score.

COURSE PLACEMENT



PLACEMENT OUTCOME	PSLE SCORE
EXPRESS	4 – 20
EXPRESS / N(A) OPTION	21 – 22
N(A)	23 – 24
N(A) / N(T) OPTION	25
N(T)	26-30, with AL7 or better in both EL <u>and</u> MA

Express, N(A) and N(T) courses will be phased out by 2024

- 4 Subject ALs are added to form the PSLE Score.
- PSLE Scores range from 4 to 32, with 4 being the best.
- Students will be placed in a secondary school course based on their PSLE Score – Express, Normal (Academic) or Normal (Technical).

WHAT IS SUBJECT-BASED BANDING (SECONDARY)?

- SBB (Sec) provides students with greater flexibility to take subjects at a level that best caters to their strengths, interests and learning needs.
- For students posted to the Normal courses, they will be eligible to take subjects at the Express or N(A)-Level based on the following eligibility criteria:

FOR STUDENTS OFFERED THE N(A) OR N(T) COURSE	
PSLE SUBJECT GRADE	OPTION TO TAKE SUBJECT AT
AL 5 or better in a Standard level subject	Express level
AL 6 or better in a Standard level subject <u>OR</u> AL A in a Foundation level subject	N(A) level

LEARNING CAN BE CUSTOMISED TO SUIT THE STUDENT'S STRENGTHS

N(A)
EL

N(A)
MTL

Express
Mathematics

With SBB

N(A)
Science



Bryan

ENGLISH LANGUAGE AL6

MOTHER TONGUE LANGUAGE AL6

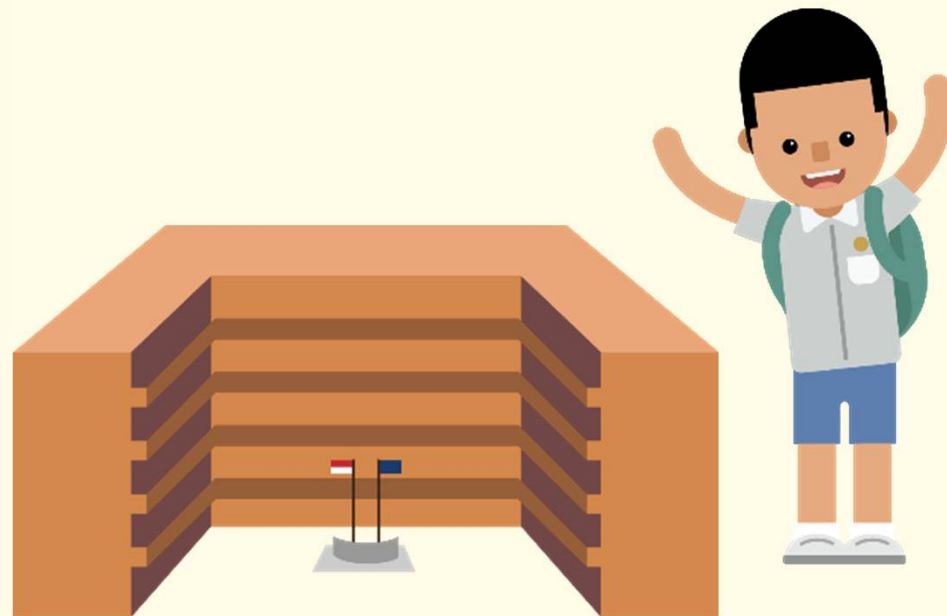
MATHEMATICS AL5

SCIENCE AL6

PSLE SCORE: 23

Offered N(A) course

HOW S1 POSTING WORKS



CHOICE ORDER OF SCHOOLS WILL MATTER MORE

- Students continue to have **six choices** in selecting their secondary schools.
- Students will be posted to a secondary school based on **academic merit, i.e. PSLE Score**, and their **school choice rank order**.
- If two students with the same PSLE Score vie for the last remaining place in a school, the following tie-breakers will be used in the following order:

1. CITIZENSHIP

2. CHOICE ORDER OF SCHOOLS

3. COMPUTERISED BALLOTING

- The new tie-breaker based on school choice order recognises the different considerations that families have in making school choices.

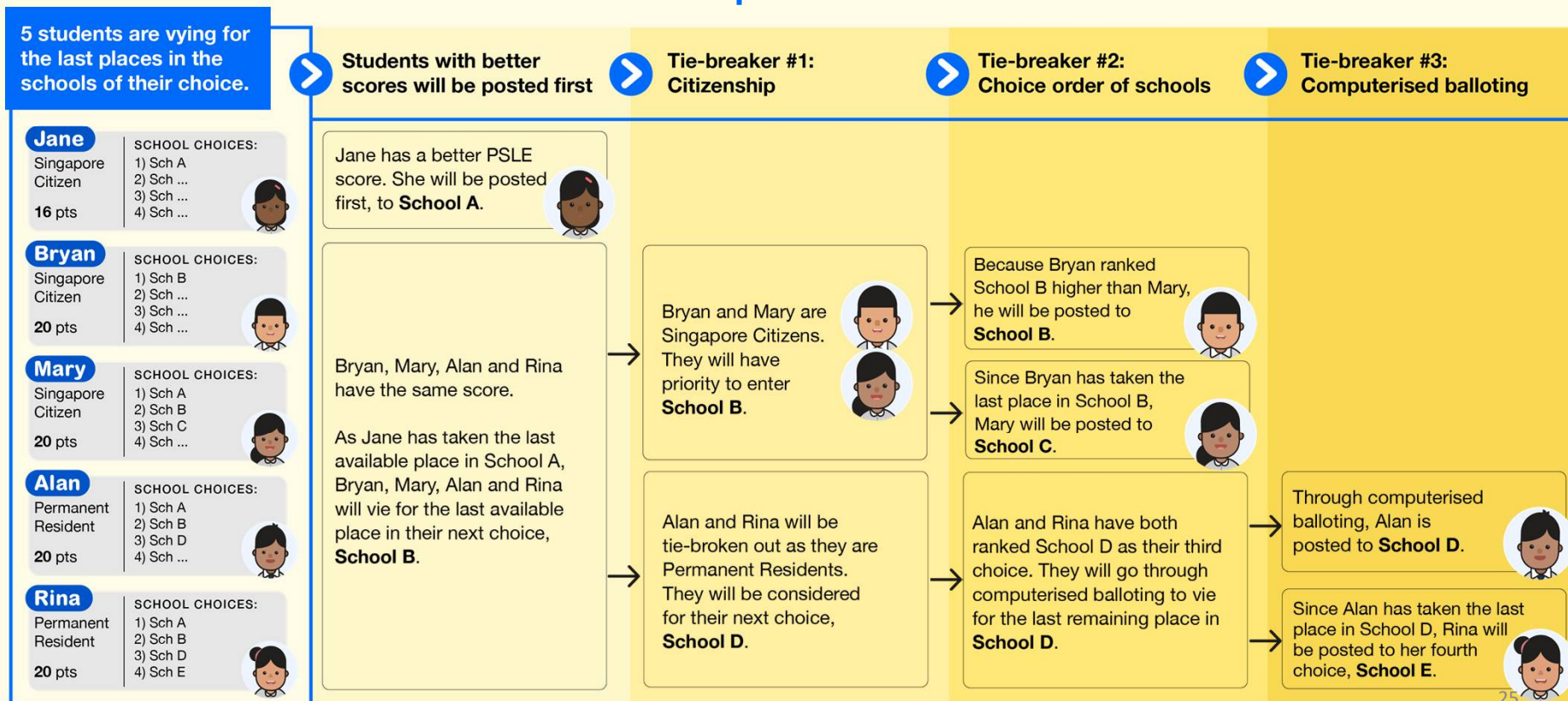
NEW!



Tie-breakers

in the new S1 Posting System

Tie-breakers are used only if there is more than one student with the same PSLE Score vying for the last available place(s) in a school. Here's a simplified example.



INDICATIVE PSLE SCORE RANGES FOR INDIVIDUAL SECONDARY SCHOOLS



INDICATIVE PSLE SCORE RANGES FOR INDIVIDUAL SECONDARY SCHOOLS

Similar to the T-score system, the indicative PSLE Score range refers to the PSLE Score of the first and last student admitted into a particular school in the previous year via S1 Posting. This shows the range of student profiles who enter each school.

Example

XX Secondary School
Indicative PSLE Score range of 2021

Express	15	20
Normal (Academic)	21	24
Normal (Technical)	25	28

Indicative PSLE Score of the first student posted into the school in the respective courses

Indicative PSLE Score of the last student posted into the school in the respective courses [i.e. the school's Cut-Off Point (COP)]







Students who scored better than the school's COP in this particular posting exercise would have been admitted to the school

USE OF HIGHER MOTHER TONGUE (HCL) FOR ADMISSION INTO SAP SCHOOLS



HCL POSTING ADVANTAGE FOR ENTRY TO SAP SCHOOLS WILL CONTINUE

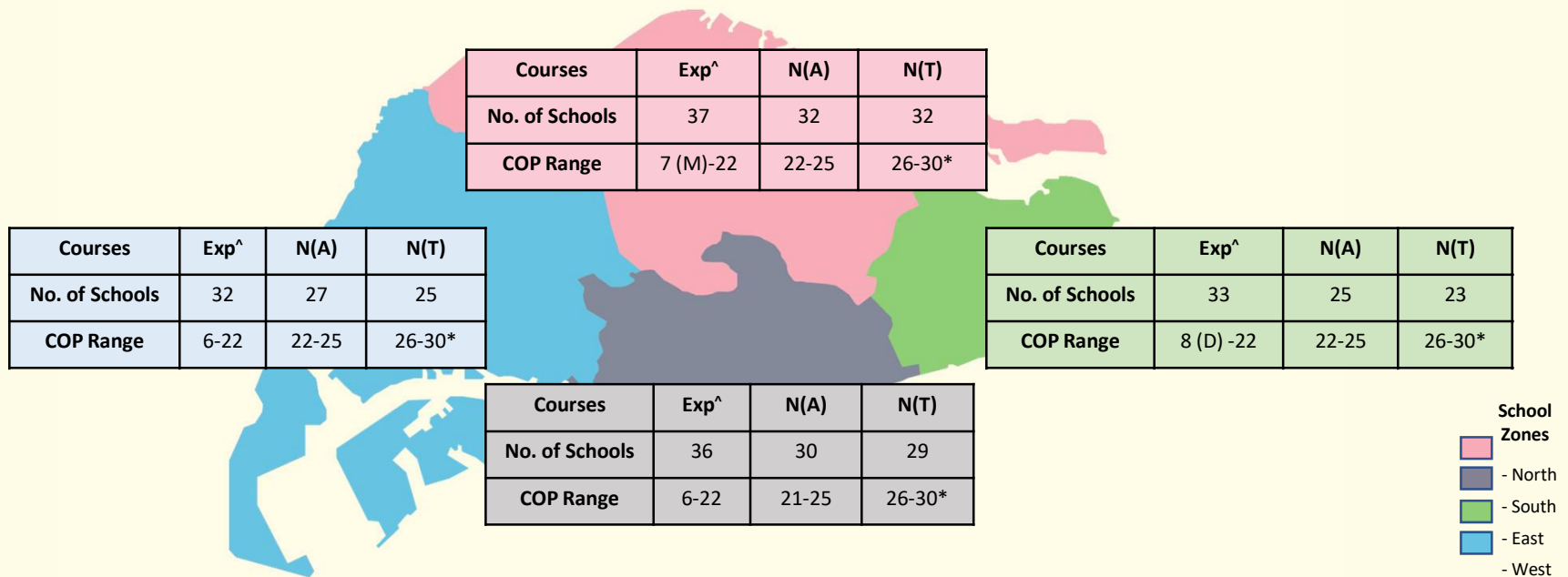
- Students' HCL results will be denoted as 'D' (Distinction), 'M' (Merit) or 'P' (Pass).
- Students will need to obtain a Distinction / Merit / Pass in HCL at PSLE; and an overall PSLE Score of 14 or better to be eligible for posting advantage to an SAP school.
- Students will be ranked taking into account their performance in HCL.
- This posting advantage applies before the tie-breakers for S1 Posting.

1st		7	NO HCL
2nd		8	DISTINCTION
3rd		8	MERIT
4th		8	PASS
5th		8	NO HCL
6th		9	DISTINCTION

WHAT THE INDICATIVE PSLE SCORE RANGES SHOW

- **With a blunter scoring system, there are fewer possible PSLE Scores. Schools would also be less differentiated by COPs, which will mean that students would have a wider range of secondary schools to choose from. Students therefore do not have to chase the last mark.**
 - There is a good spread of schools with COPs across different PSLE Scores
- **Schools' indicative PSLE Score ranges have remained largely stable in recent years.**
 - The ranges may vary from year to year depending on the cohort's PSLE results and their school choices for that year's S1 Posting Exercise
 - Fluctuations of +/-1 AL for AL COPs are typical

GOOD SPREAD OF SCHOOLS WITH A RANGE OF CUT-OFF POINTS (COPs)



SCHOOL CHOICE JOURNEY

- The PSLE Score ranges are a useful reference point for students and parents to consider secondary schools.
- Parents and students are encouraged to use this information, together with other factors such as the secondary schools' distinctive programmes, CCAs, ethos and cultures, to shortlist schools that would best fit the educational needs of the student.
- Parents and students may consider DSA-Sec as an alternative admission pathway to access their preferred secondary school.



SUBMITTING SCHOOL CHOICES

- Use all six options so that your child is more likely to get into a school of his./her choice.
- Consider at least 2-3 schools where your child's PSLE Score is better than the school's previous year's Cut-Off Point.
- As school choice order is a tie-breaker, you should place the schools your child is most keen on as a higher choice.

In choosing secondary schools, it is not about getting into the most popular school but the school that is best for your child!



TIMELINE OF THE S1 POSTING EXERCISE



BEFORE OCTOBER

Explore schools and shortlist suitable schools

MySKILLSfuture

SCHOOL FINDER



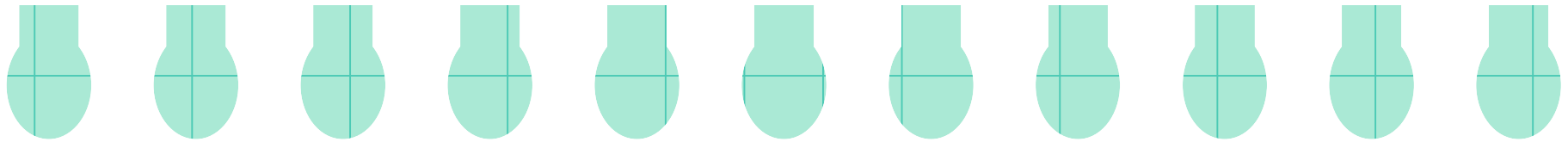
NOVEMBER

1. Release of the PSLE results
2. Submission of Secondary Option 1 Form



DECEMBER

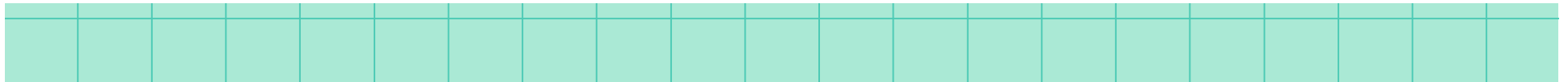
Release of School Posting results



Direct School Admission (DSA)



**YOUR CHILD CAN ALSO ENTER
SECONDARY SCHOOLS VIA
DIRECT SCHOOL ADMISSION
(DSA)**



TIMELINE OF THE DSA EXERCISE

DSA allows students to apply to schools before taking the PSLE. They can apply based on different talents and achievements, such as sports, arts, leadership and specific academic areas.



**BEFORE
MAY**

Explore schools and their talent areas, and shortlist suitable schools



MAY
Apply for DSA



**JUNE TO
SEPTEMBER**

Attend selection trials, interviews and auditions



**BY
SEPTEMBER**

Receive DSA offers if successful

DSA EXERCISE

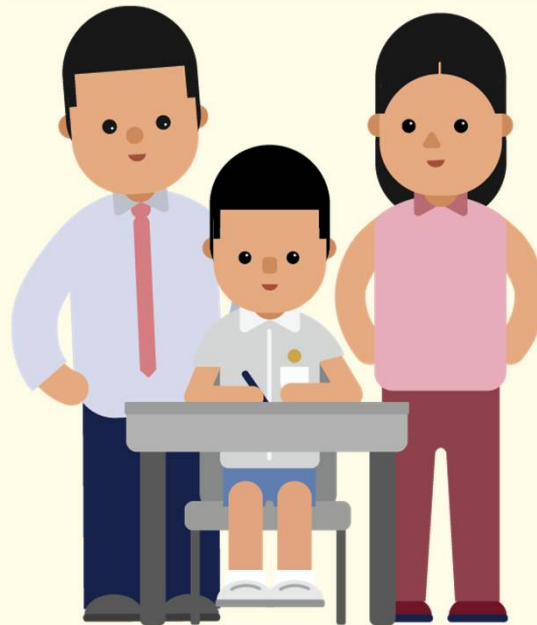
- Your child can indicate up to **three choices**.
- Of the three choices, **a maximum of two choices** can be used to apply to the **same school**, for **two different talent areas** of that school.
- Academic results and school-based achievements will be shared directly with MOE. Therefore, there is no need for testimonials and hardcopy documents.

School	Integrated Programme	‘O’ Level Programme	Express
Raffles Institution			4 – 6
Raffles Girls’ School			4 – 6
Nanyang Girls’ High School			4 – 7
Hwa Chong Institution			4 – 7
Catholic High School	5 - 8	6 - 9	
CHIJ St. Nicholas Girls School	4 – 7	5 – 8	
River Valley High School			4 – 9

School	Express	Normal Academic	Normal Technical
Yishun Town Secondary School	6 – 13	21 – 23	25 – 27
Chung Cheng High Yishun	6 – 11	21 – 23	25 – 27
Ahmad Ibrahim Secondary School	10 – 17	21 – 24	25 – 28
Orchid Park Secondary School	12 – 19	21 – 24	25 – 28
Yishun Secondary School	11 – 20	21 – 24	25 – 28
Evergreen Secondary School	9 – 15	21 – 23	25 – 27
Ang Mo Kio Secondary School	11 – 16	21 – 24	25 – 28
Naval Base Secondary School	11 – 20	21 – 24	25 – 28
Anderson Secondary School	4 – 10	21 – 23	25 – 27

School	Express	Normal Academic	Normal Technical
Northland Secondary School	8 – 22	22 – 25	26 – 28
Northbrooks Secondary School	12 – 22	21 - 25	25 – 28
Presbyterian High School	8 – 13	21 – 23	25 – 27

SUPPORTING PARENTS & STUDENTS



RESOURCES

SCHOOLFINDER

**SCHOOL
FINDER**

[https://go.gov.sg/
schfinder](https://go.gov.sg/schfinder)

SEC SCHOOL EDUCATION BOOKLET



[https://go.gov.sg/psle-
sec-sch-brochure](https://go.gov.sg/psle-sec-sch-brochure)

PSLE SCORE CALCULATOR AND INFORMATION ON PSLE AND FULL SBB

1. Calculator

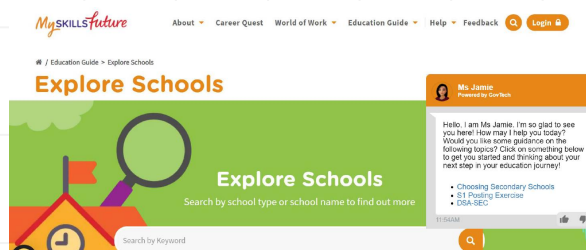
Subject	AL
English Language	5
Mathematics	5
Science	5
Mother Tongue Language	5
PSLE Score ¹	19

Your child is eligible for the Express course.

Your child is also eligible to take an Asian Language as a [Third Language](#).

[https://go.gov.sg/psle
fsbb](https://go.gov.sg/pslefsbb)

MYSKILLSFUTURE STUDENT PORTAL



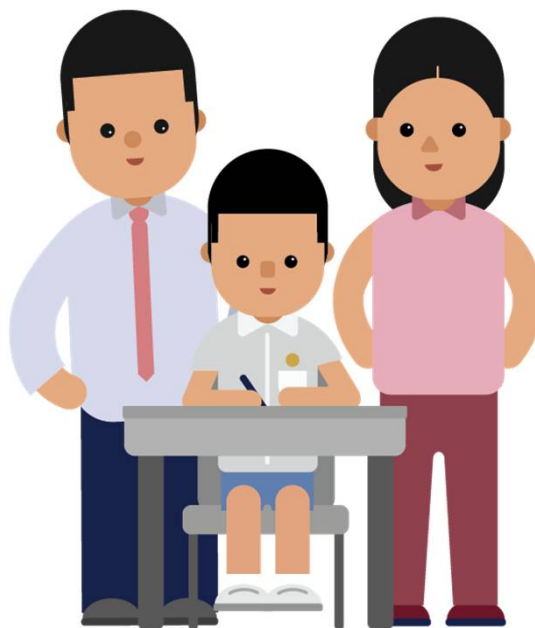
<https://go.gov.sg/exploreschools>

WHAT'S NEXT?



<https://go.gov.sg/whats-next-psle>

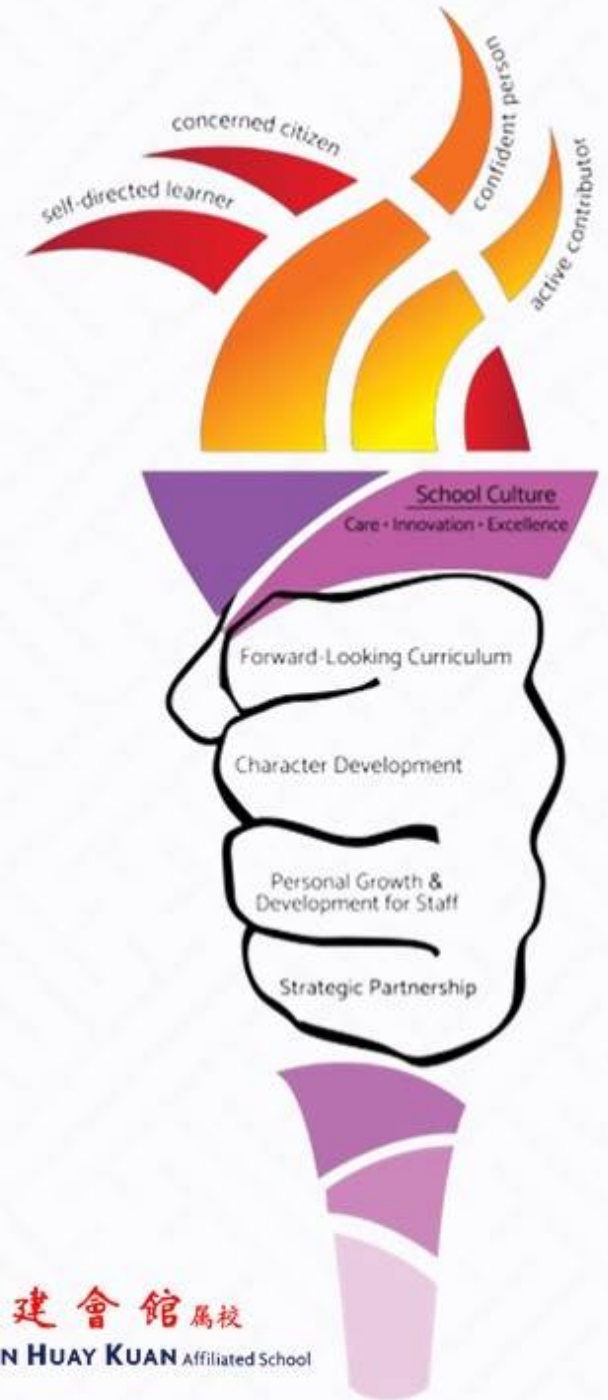
ASSESSMENTS & PROGRAMMES



P5 & P6 ASSESSMENT WEIGHTAGE

Level	Term 1	Term 2	Term 3	Term 4
P5	15%	15%	15%	55%
P6	10 %	30 %	60%	-

Cyber Wellness



What is there a need for cyber wellness?

Information and Communication Technologies (ICT) are becoming increasingly pervasive in our world.

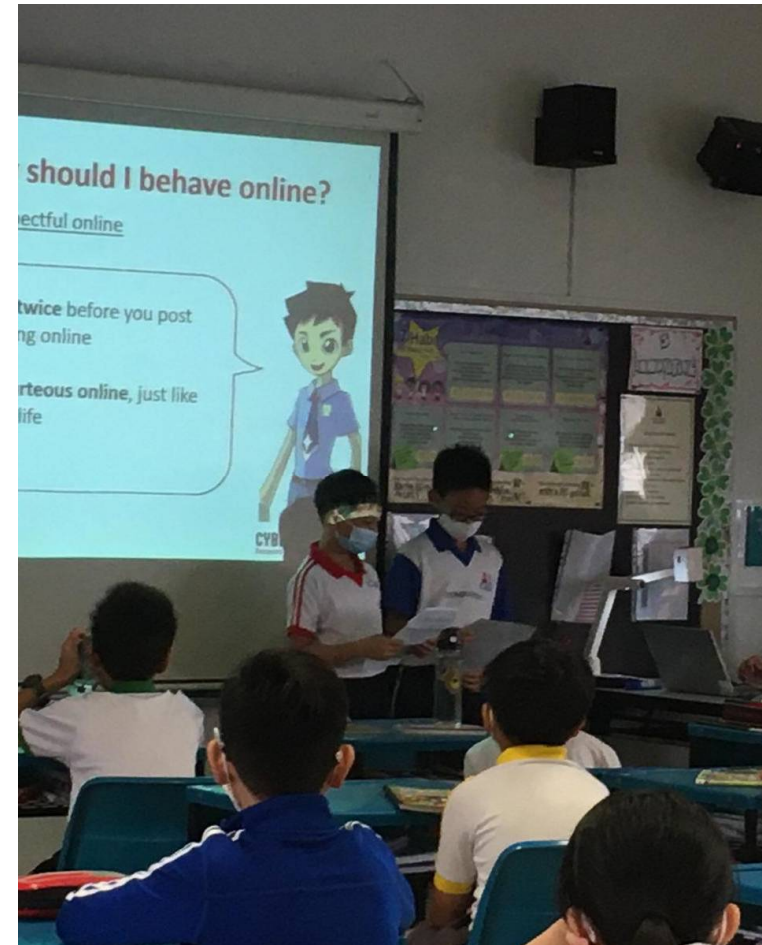
While creating instant connectivity and access to vast repositories of information, knowledge, and opinions, the open nature of the Internet can expose our students to undesirable content and influences.

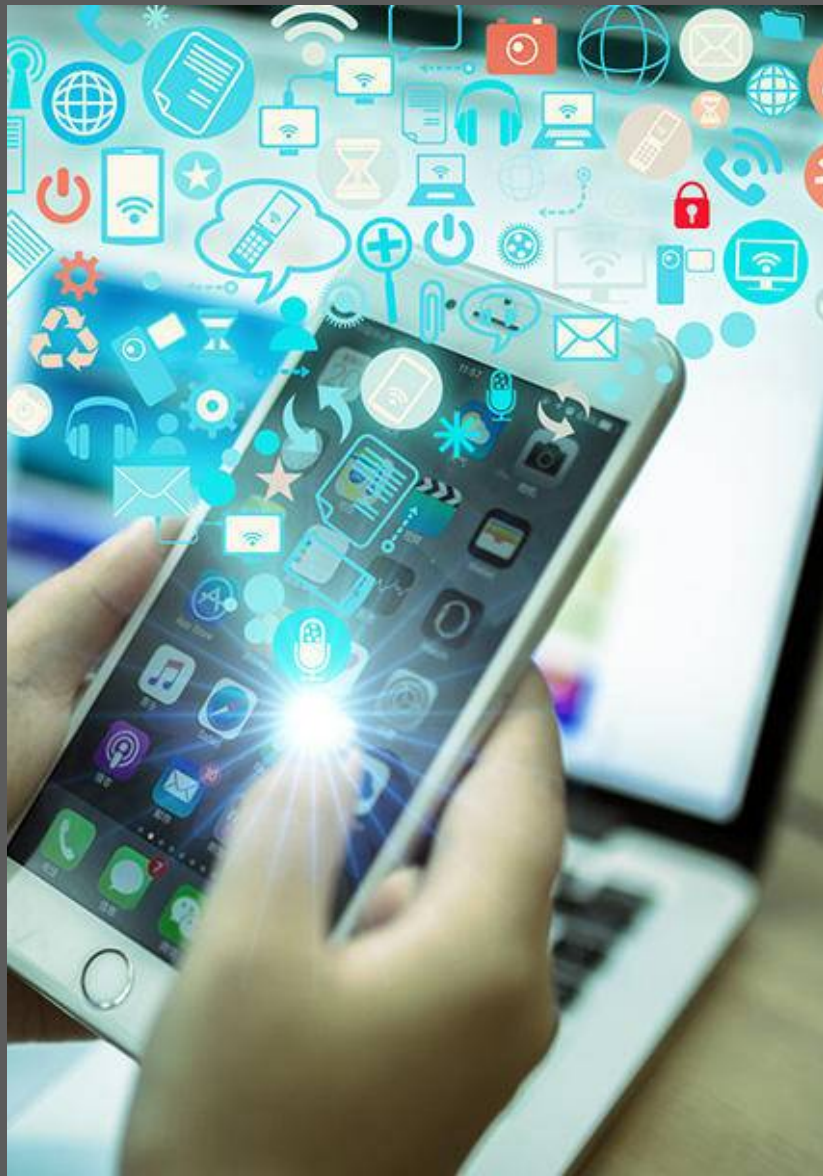


Cyber wellness in Character and Citizenship Education (CCE)

Cyber Wellness in Character and Citizenship Education (CCE) focuses on the well-being of our students as they navigate cyberspace.

Our curriculum aims to equip students with the knowledge and skills to harness the power of ICT for positive purposes, maintain a positive presence in cyberspace and be safe and responsible users of ICT.





To protect children, the major social media platforms have age restrictions to prevent those underage from creating profiles.

Age Restrictions for Social Media Platforms

What is the minimum age for account holders on these social media sites and apps?

Under 13



13+



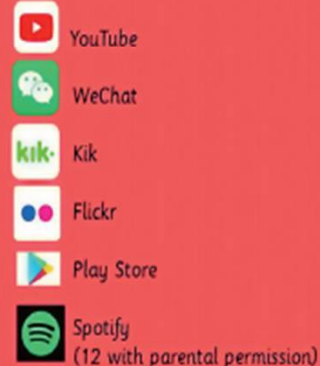
16+



17+



18+ or 13 with parent's permission



"How do we ensure that our young make the right choices, and survive well in the online world? (...) Schools can work with parents and make a big difference."

– Minister Ong Ye Kung, Committee of Supply Debate 2020



Did you know?

MOE recently announced that:



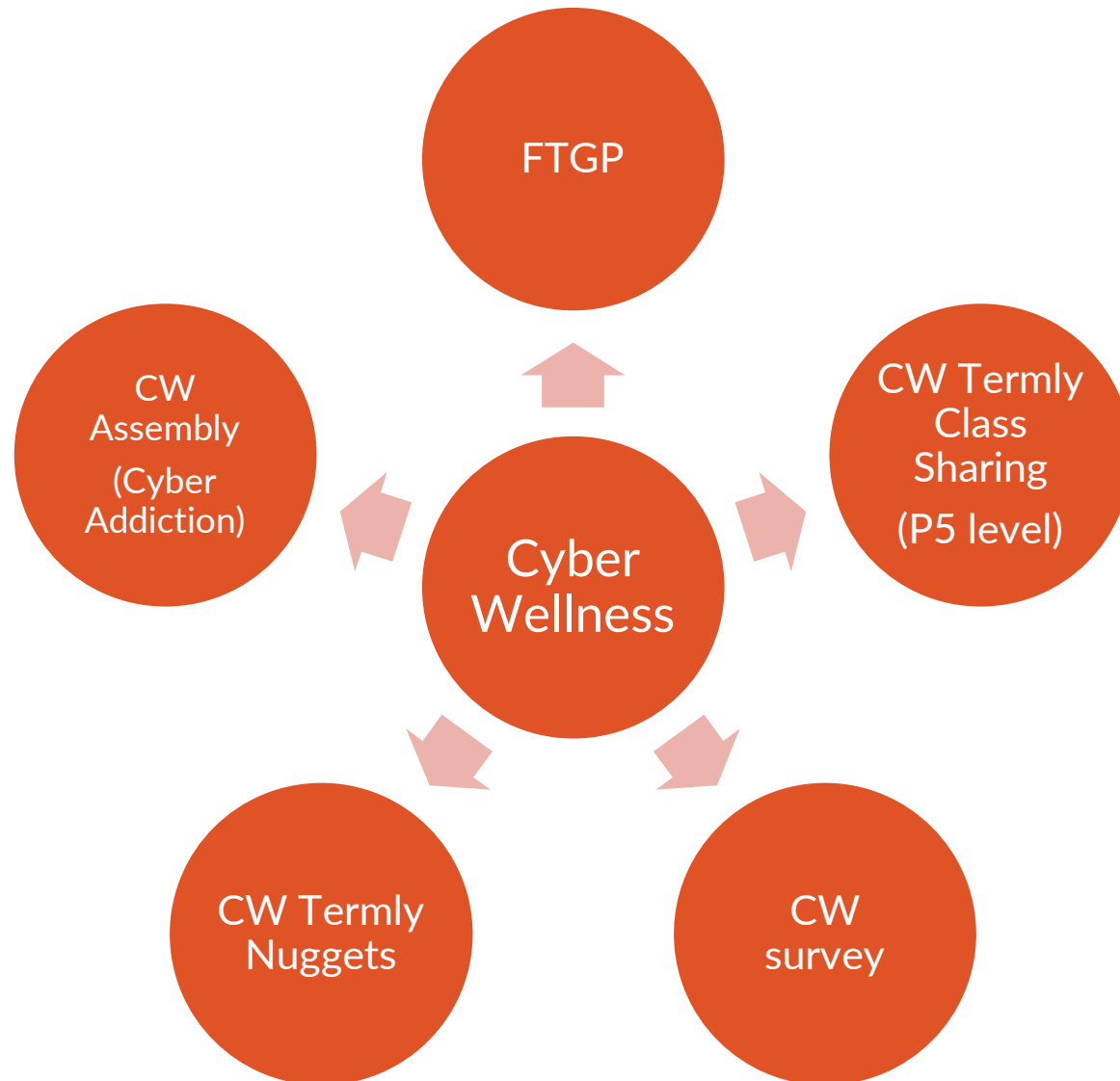
Digital literacy will feature more strongly across the curriculum.



More time will be spent discussing Cyber Wellness during Character and Citizenship Education lessons.

Students will learn skills to navigate the online space confidently, and use technology healthily.

Overview of Chongfu's Cyber wellness Programmes





A hand is shown interacting with a series of glowing, white-outlined digital icons against a dark blue background. The icons include a smartphone, a laptop with an envelope, a magnifying glass with a plus sign, musical notes, speech bubbles, a camera, a document with a checkmark, a person icon with a notification bubble, and a folder with an envelope. The hand is positioned as if it is about to touch or has just touched one of the icons, which are scattered around it.



Cyber Nuggets
Sharing #1

Abuse of Technology

Cyber wellness #4: Fake News

News Covid-19 Lifestyle Abroad Weekend





**NTUC FairPrice** 
on Saturday


[SCAM ALERT] We have been notified of a number of messages circulating online regarding appliance or cash giveaways with an attached survey. This is neither run nor endorsed by FairPrice.

Do verify any information you receive online before sharing your personal information. You can do this by checking the information source or website URL. We will only host information on our promotions on our official website (www.fairprice.com.sg) or on our social media pages (Facebook: NTUC FairPrice or Instagram: @fairpricesg).


You can also help prevent other users from falling prey to fraudulent social media accounts or scams by reporting any fake Pages and scam posts that you may come across to Facebook with just a few simple steps:
fb.com/thatsmyfairprice/posts/10158718911296409

< Golden Anniversary...



**Golden Anniversary FairPrice Fortune** is 🎉 celebrating this special day.
3 d · 🌐

FairPrice turns 50! To celebrate this date, we are giving away one of 500 Samsung TVs from 42" to 85" inches onl... See more



CYBER ADDICTION

***PREVENTION IS
BETTER THAN CURE***





Look out for these signs of addiction

- Lack of self-control and throwing of tantrums when it comes to switching off digital devices
- Irritability when not on device
- Loss of sleep due to time spent on device
- Health issues such as eye problems and back aches
- Drop in grades

Support at home



Parents play a key role in their children's growth. Students benefit the most when the home and school environments are attuned to each other. To help your child stay safe and have positive experiences online, you can:

- Activate parental controls on your home devices.
- Model good digital habits for your child.
- Set ground rules for internet use.
- Navigate the internet together to understand their usage.

THANK YOU

